

# *Building Drought Resilient Communities in Montana*



Centennial Valley

TINA LAIDLAW, EPA

LAIDLAW.TINA@EPA.GOV

# National Drought Resilience Partnership (NDRP)

---

*“Enhancing Community Preparedness for Drought”*

National Federal Partners:

- EPA, USDA, DOI, NOAA, ACOE, DOE, FEMA





- Create a single federal point of contact for drought;
- Support for a National Soil Moisture Network;
- On-line tools to access Federal resources; and
- Demonstration projects designed to develop and promote resilience strategies at regional levels.

## NDRP (National) Goals



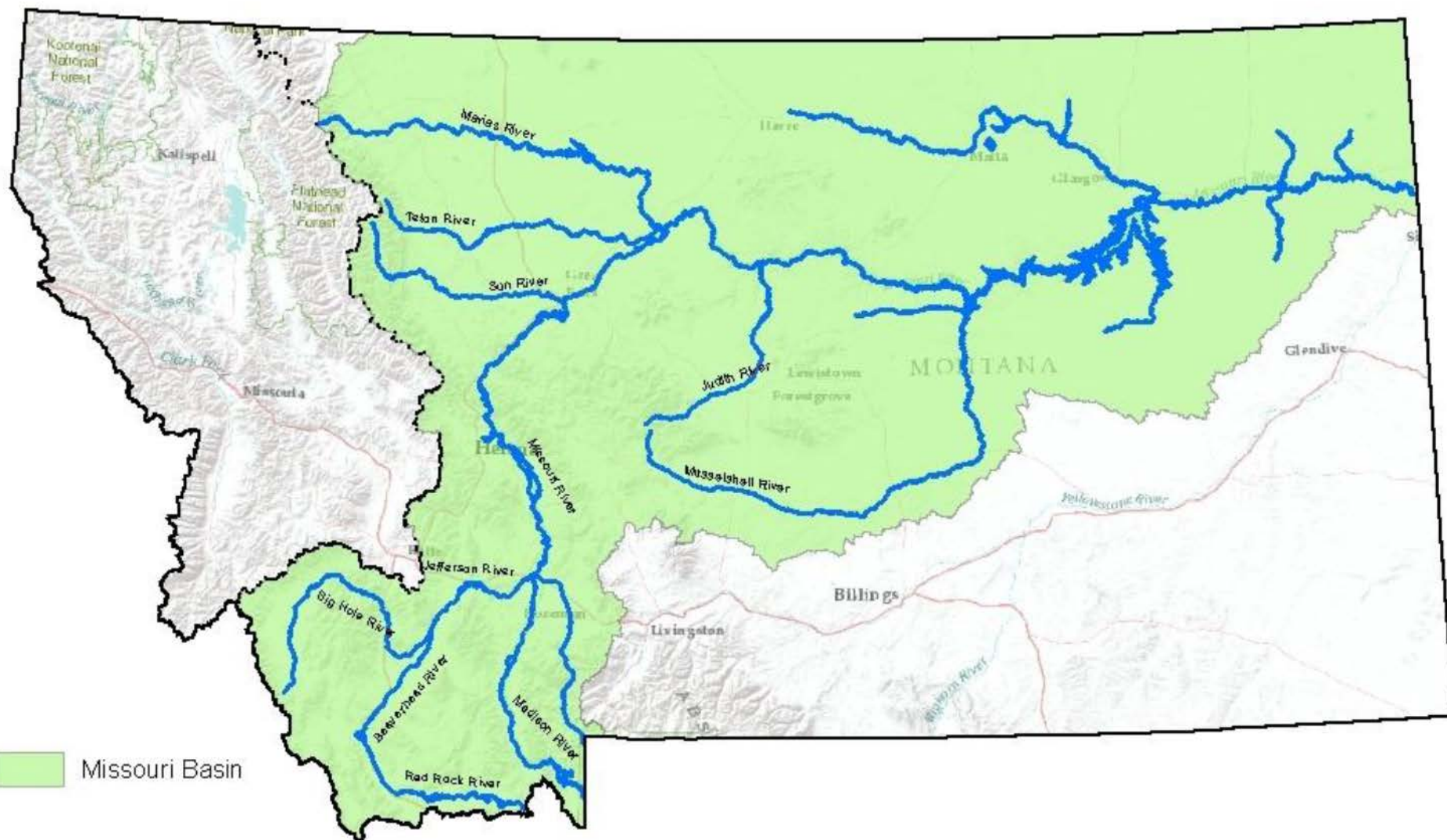




---

# MONTANA NDRP DEMONSTRATION PROJECT

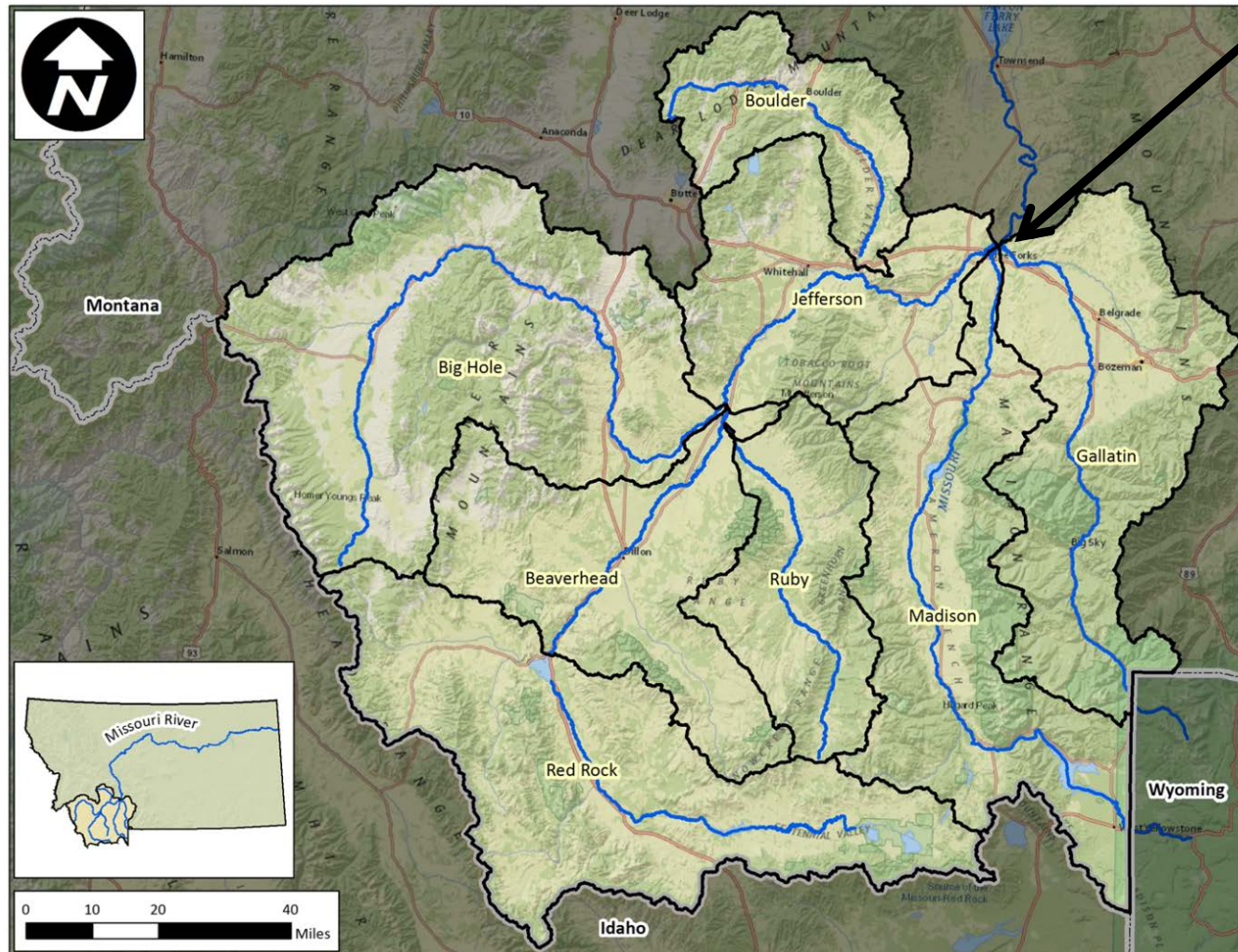
# Missouri Basin in Montana





# MT NDRP Demonstration Project

Three Forks





# Montana Demonstration Project

---

- Montana's Vision: Successful drought preparation must be:
  - locally-led
  - reflect the water management issues specific to that watershed, and
  - produce on-the-ground results.



# Overall Goal

---



- ***Leverage multiple resources*** (human, technical & financial)
- ***Engage communities*** in drought preparedness planning and
- ***Implement*** projects that build ecologic and community resiliency in the Missouri Headwaters Basin.





# MT Demonstration Project

## Federal, State and NGO Partners

---



### **Federal (National/ State & Local)**

NRCS, FEMA, NOAA-NIDIS, NDMC,  
Office of Climate Change Policy,  
BOR, BLM, USFWS, USGS, EPA, BIA,  
USFS, ACOE, GNLCC

### **State, Regional and Local**

MT DNRC (Water & Forestry), MT DEQ,  
MT FWP, & MT DES

MACD/SWCDMI, MWCC

CLLC, TNC, FW, GVLT, One Montana,  
GYC & HDC

GRTF, GGWC, JCP, MCD, MVRG, MRF,  
WCS (CPP), RVCD, RWC, CVA, BWC,  
BCD, BHWC, JWC & LJWC

Counties (Commissioners & Planners)

# Basin Challenges & Opportunities

## ***Challenges:***

- Basin legislatively closed to new surface water appropriations
- Persistent drought
- Large, mostly rural landscape
- Changing demographics & land use
- Data integration and resolution
- Limited Funding to support Capacity





# Basin Challenges & Opportunities

---



## ***Opportunities and Partnerships:***

- Headwaters Basin
- Good mix of public & private lands
- Strong core of Community based organizations (CDs, WSS & BSWC)
- Active Regional NGOs engaged in the Basin
- Multiple agencies & planning efforts
- Landscape Connectivity





# 2014-15 Activities

---

Nov- Federal Partners convene in Bozeman to layout plan

Jan. – MT Big Sky Watershed AmeriCorps (BSWC) members arrive

Mar. - NOAA, NIDIS & NDMC host:

*Building Drought Early Warning Capacity Workshop*

Sept. – Workgroup meeting to develop Drought Resilience Workplan

Nov – Shared finalized Workplan with Agency reps in DC.

# Workplan Goals

- **Provide Tools for Drought Monitoring, Assessing and Forecasting**
- **Develop Local and Regional Capacity to Plan for Drought**
- **Implement Local Projects to Build Regional Drought Resiliency**





# 2016 Activities

---

- **Establish Drought Monitoring Committee**
- **Develop Communications & Outreach Plan**
- **Montana Drought Ready Communities Course**
  - Build framework for individual watershed plans
  - Combine plans for Missouri Headwaters Basin Plan
- **Build endowment fund to support local capacity**
- **Identify and implement on-the-ground projects that build resiliency**





# Course Outline:

## Montana Drought Resilient Communities

- **Drought Planning and Missouri Headwaters**
  - Core Elements
  - Community leaders and stakeholders
  - Linking to other plans
- **Understanding Water, Climate and Drought in the Community**
  - Indicators, forecasting
  - Synthesizing information
- **Vulnerability Assessments**
  - Water and Land Use Sectors
- **Developing Response Plans (Immediate)**
- **Mitigation Strategies (long term)**
- **Communication and Outreach in the Community**

# Outcomes

- Stronger Partnerships
- Engaged Local Leaders
- Enhanced Planning & Coordination
  - Shared Learning
  - Sustainable Capacity
- Connected Landscapes & Resources
  - Targeted Funding
  - Cross Collaboration
- Lessons learned & Transferability



