

Snow Survey and Water Supply Forecasting Reports: Estimating Economic Benefits

Julie Suhr Pierce, PhD
US DOI Bureau of Land Management
(Formerly USDA NRCS)





ACTIVITIES MEMBERSHIP MEDIA

RIVER RATINGS
ACTIVITIES INFO
VIDEO
TRIP FINDER

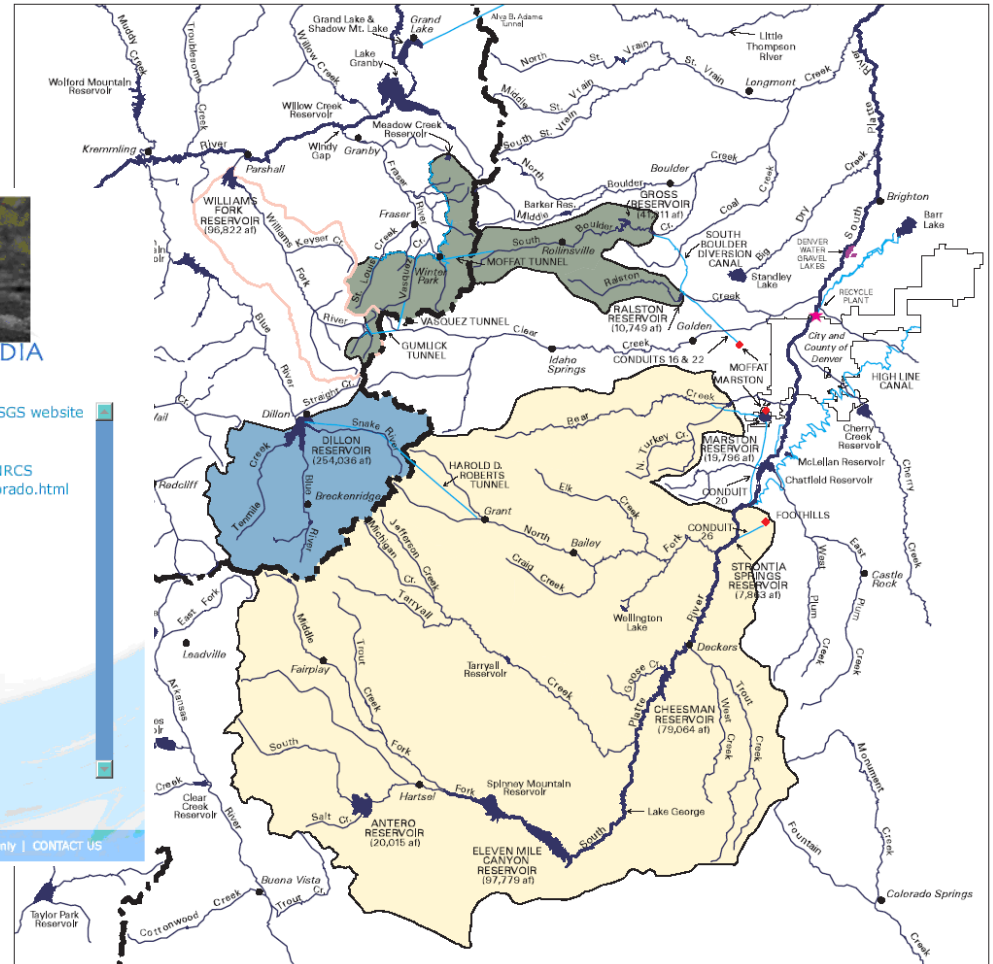
To have a look at Colorado's current river flows, please visit the USGS website here: <http://waterdata.usgs.gov/co/nwis/rt>

To have a look at Colorado's current snow pack, please visit the NRCS website here: <http://www.wcc.nrcs.usda.gov/snotel/Colorado/colorado.html>

CROA BROCHURE
MEMBER LISTING
FLOWS & SNOWPACK

©2007 Colorado River Outfitters Association | Disclaimer

Members Only | CONTACT US



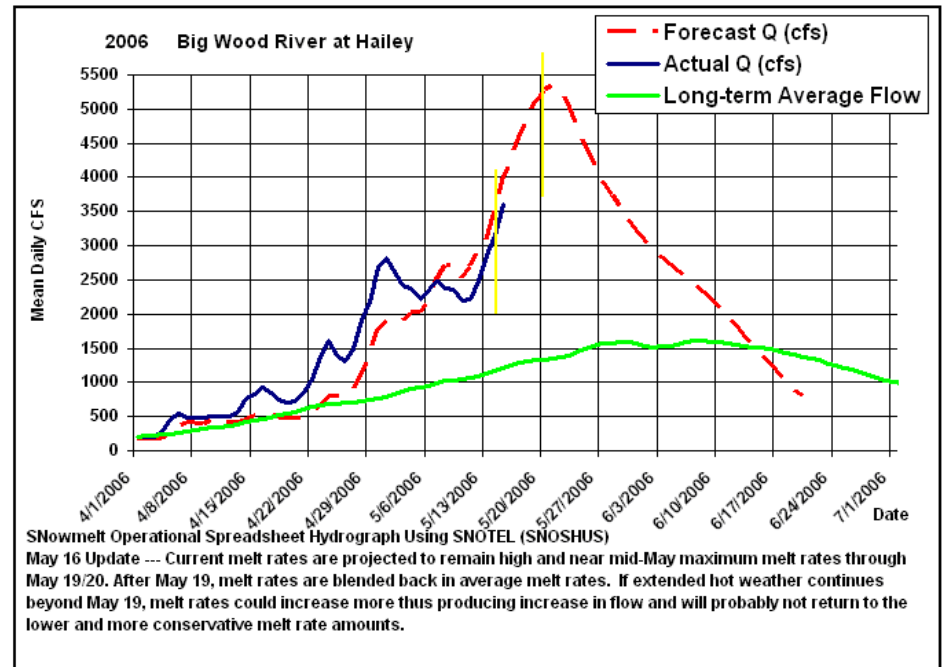
LEGEND

- | | |
|-----------------------------------|-------------------------|
| South Platte Collection System | Continental Divide |
| Roberts Tunnel Collection System | Major Stream or River |
| Moffat Collection System | Major Canal or Tunnel |
| Williams Fork Reservoir Watershed | Major Lake or Reservoir |
| Denver Water Treatment Plant | Town |



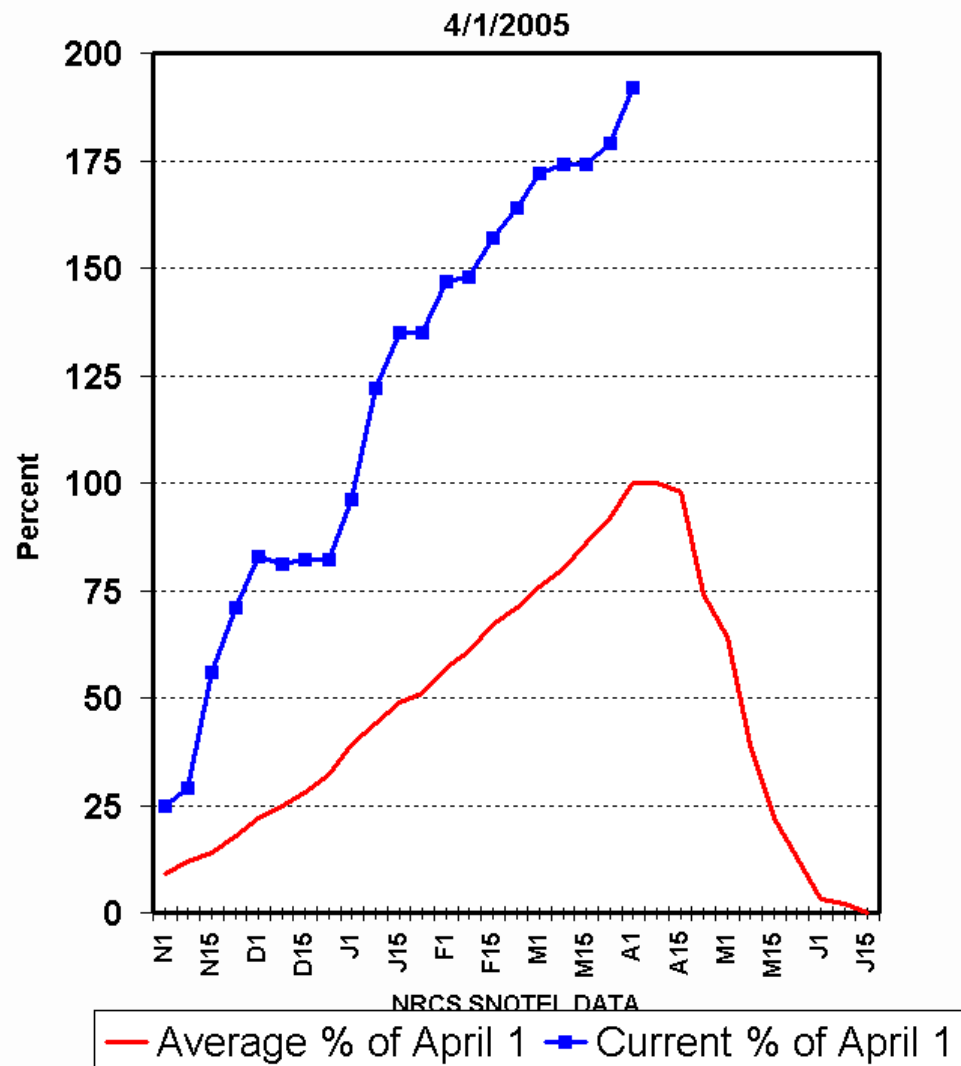
10 0 10 20 30 MILES

2006 Big Wood River at Hailey Streamflow





Escalante River Basin Snowpack Current vs Percent of April 1 Average





Approach

- “Truncated dendritic analysis”
- Determine total available budget
- Estimate which branches of research are the most likely to be productive
- Allocate initial budget across branches and test for data availability, then reallocate
- Complete as much analysis as possible on each productive branch, given time and budget constraints, then estimate and report what else would be expected to be found given additional time and budget availability

Procedure

- Identify data user groups
- Identify representative users from those groups (for whom/for which data were available)
- Conduct interviews to gather data
- Compile data/analyze data
- Complete write-up
- Editing/publication