

# The Water Data Exchange (WaDE) Program Update

Adel Abdallah, Program Manager

2019 Fall Meetings

Breckenridge, CO



WESTERN STATES  
WATER COUNCIL

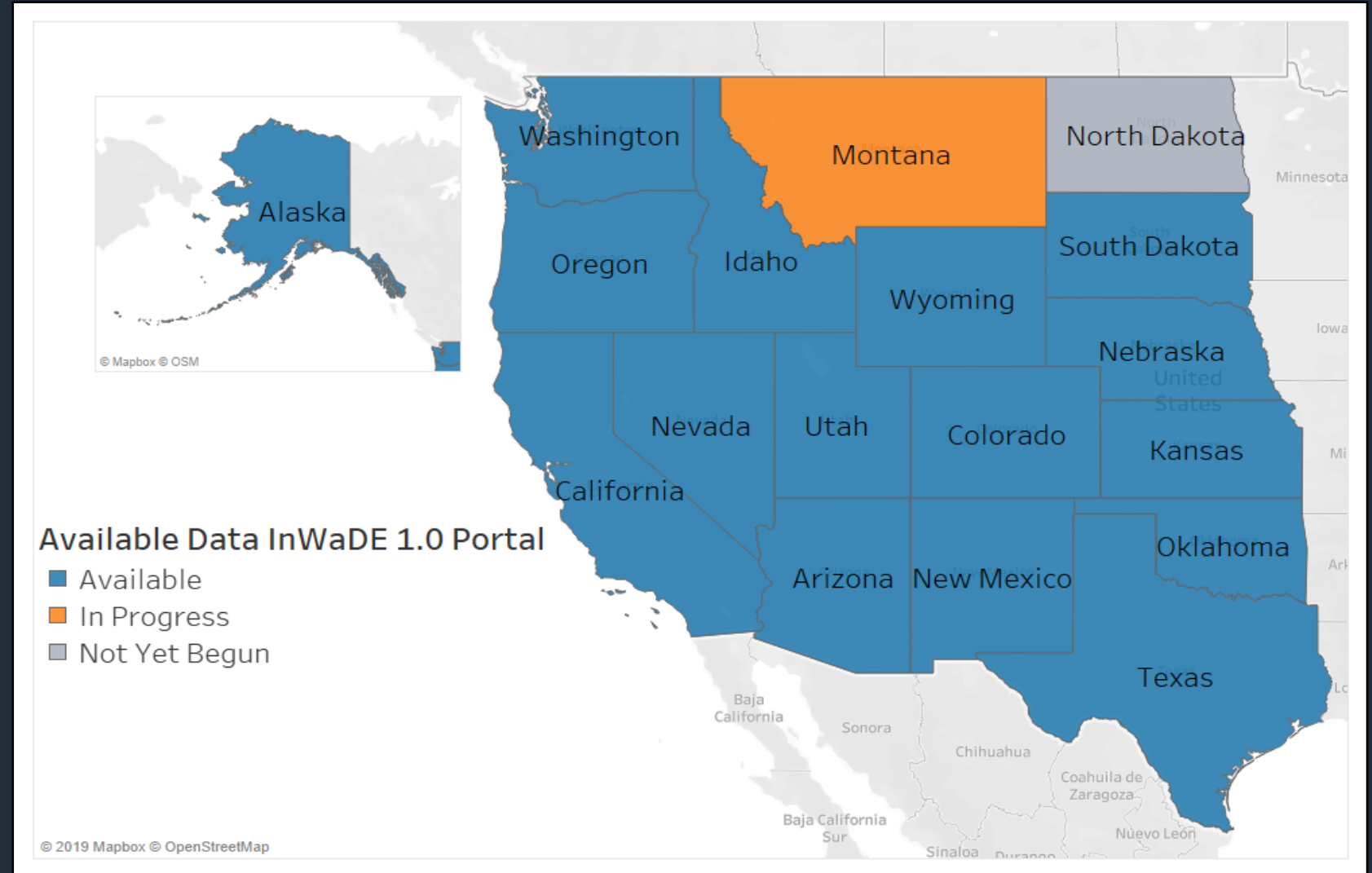
# Outline

- WaDE 1.0 and Transitioning to 2.0
- Technical Assistance to Member States
- Outreach and Collaboration

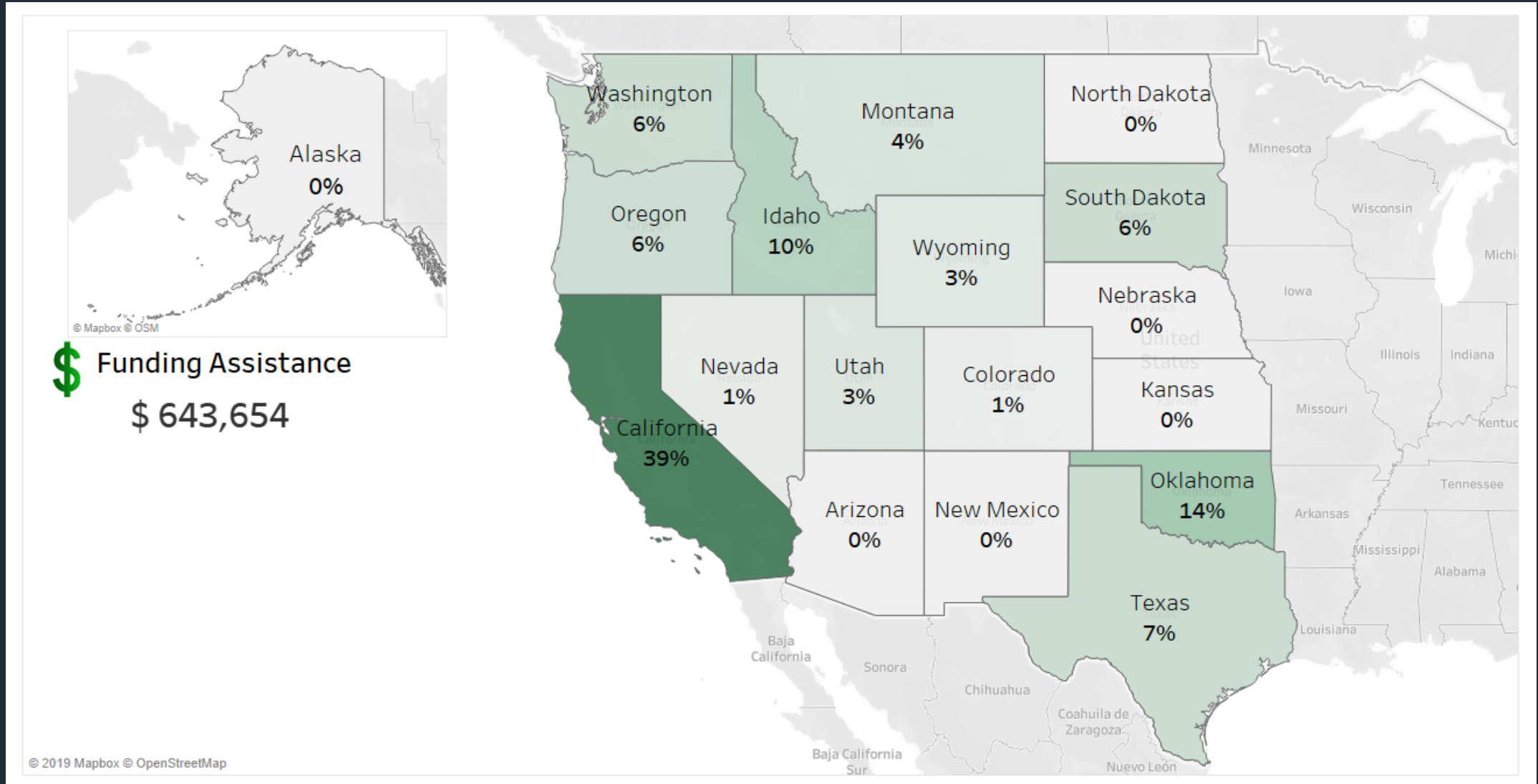


# Data Available through WaDE 1.0

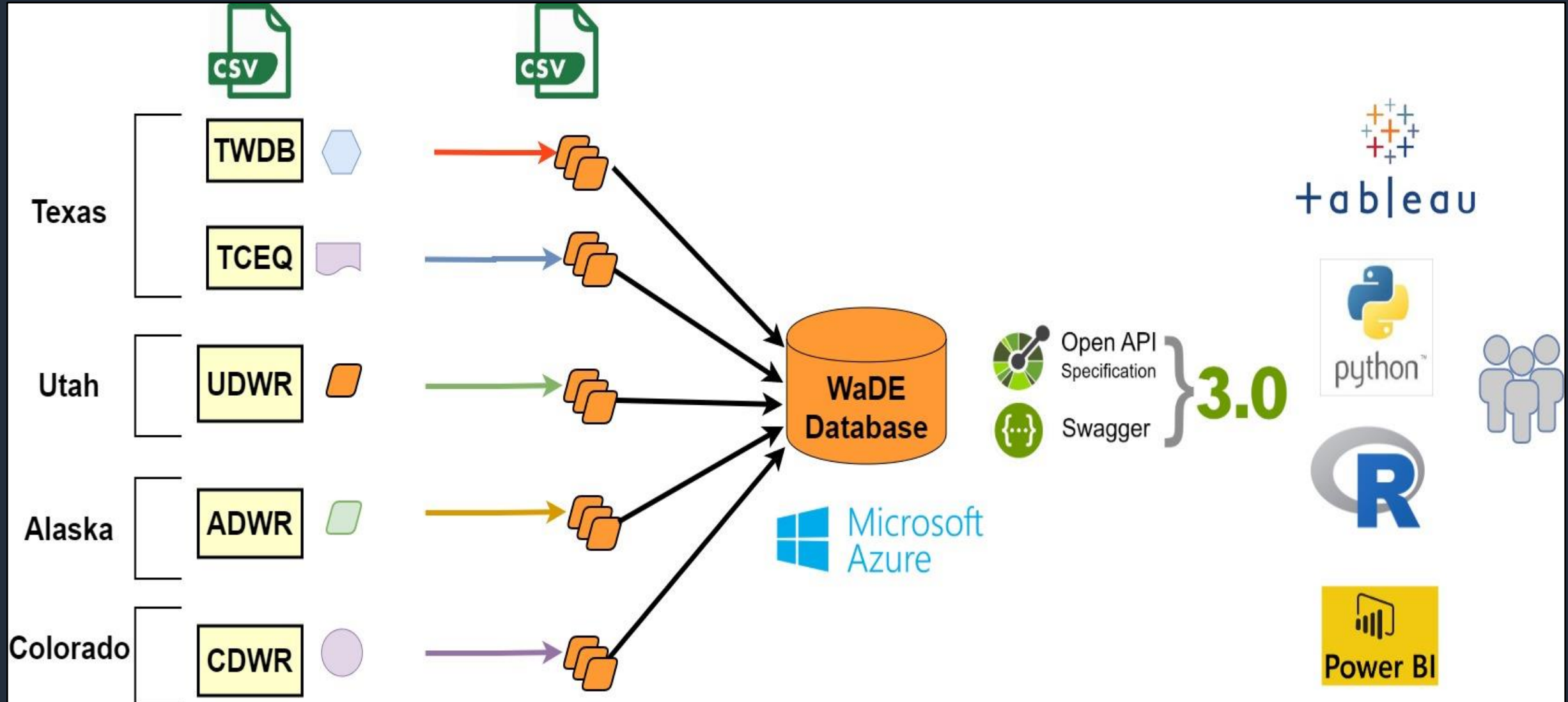
1. Water rights
2. Aggregated water budget estimates
3. Site-specific use and withdrawals
4. Regulatory overlays



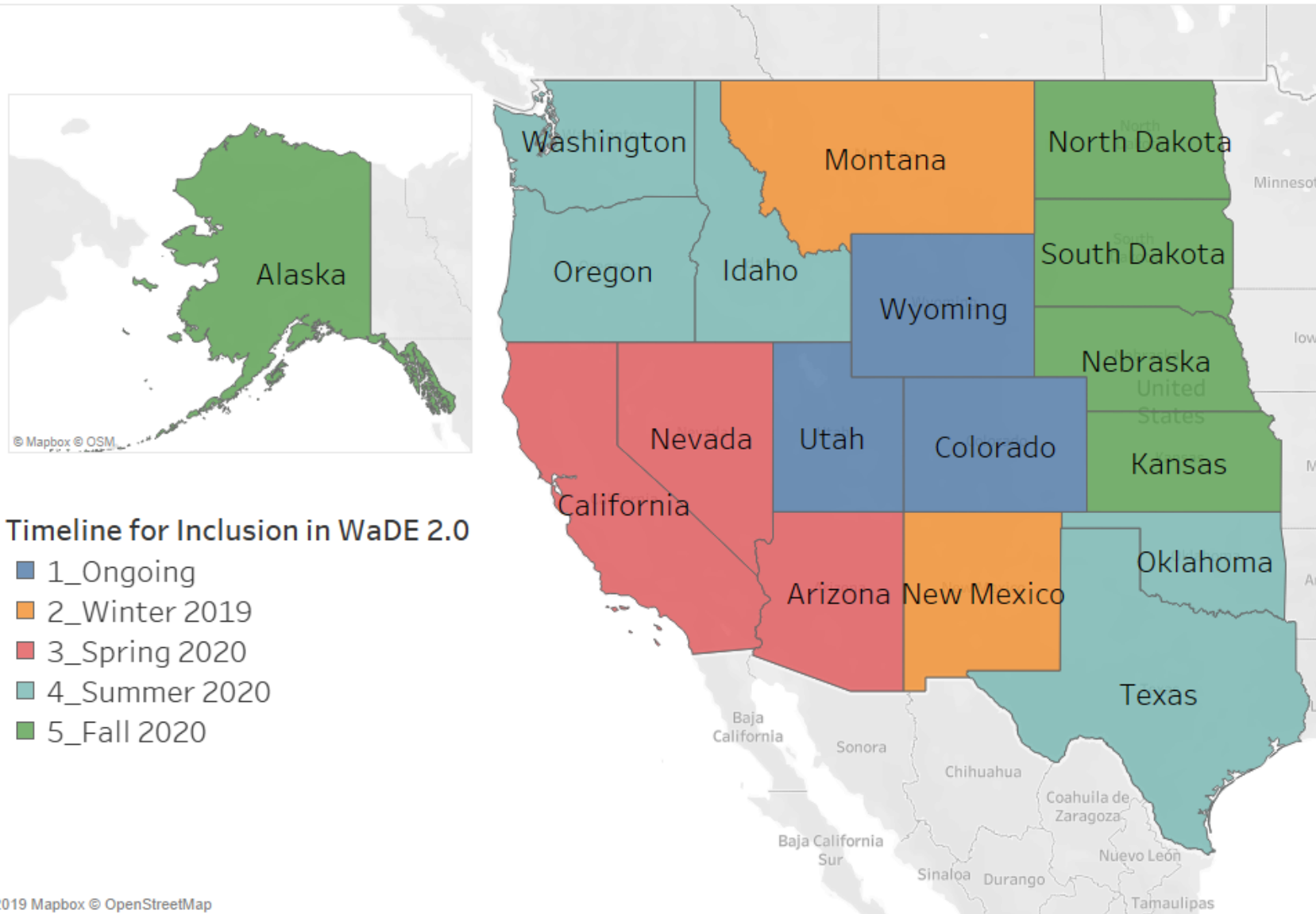
# Assistance to Secure **Funding** to Member States



# WaDE 2.0 Architecture

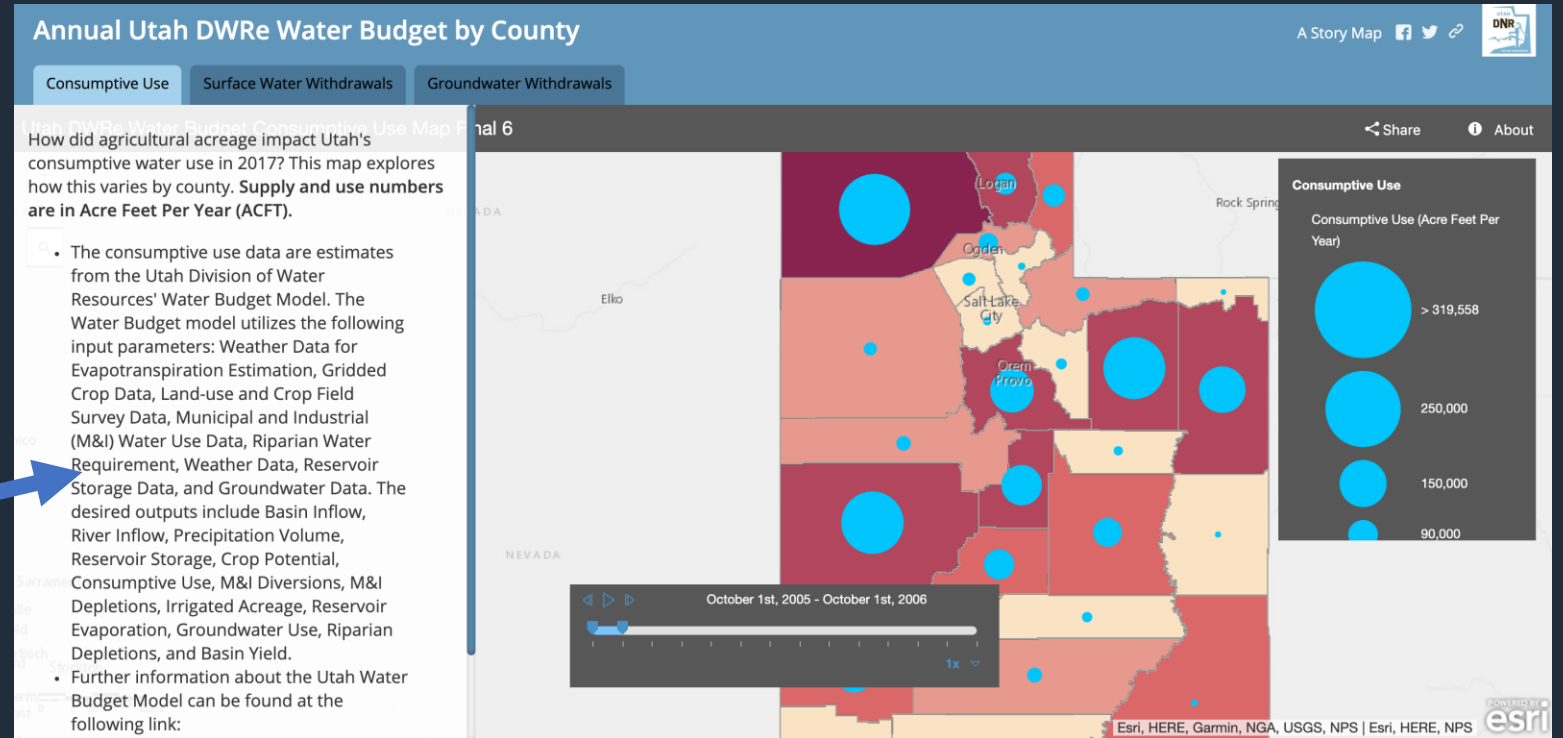


# WaDE 2.0 Transition Plan





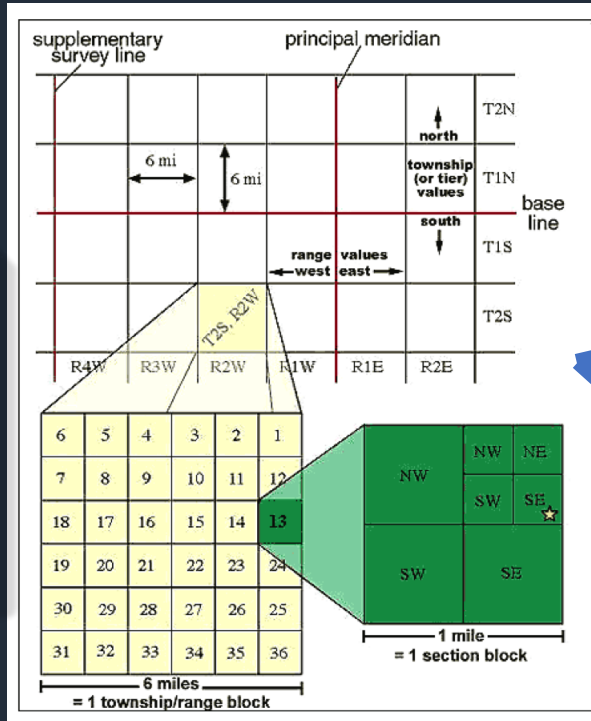
# Technical Assistance to Member States: **Utah**



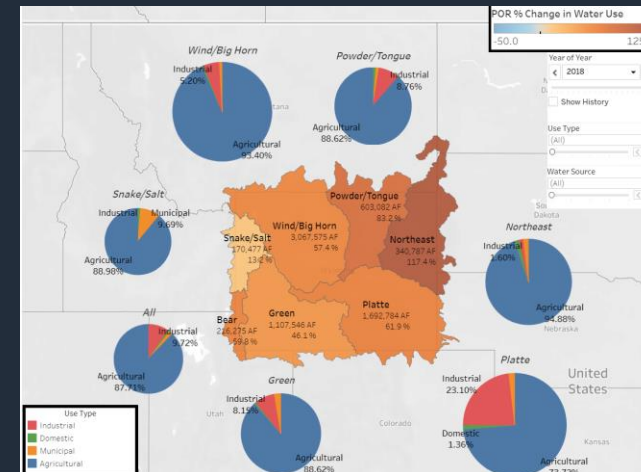
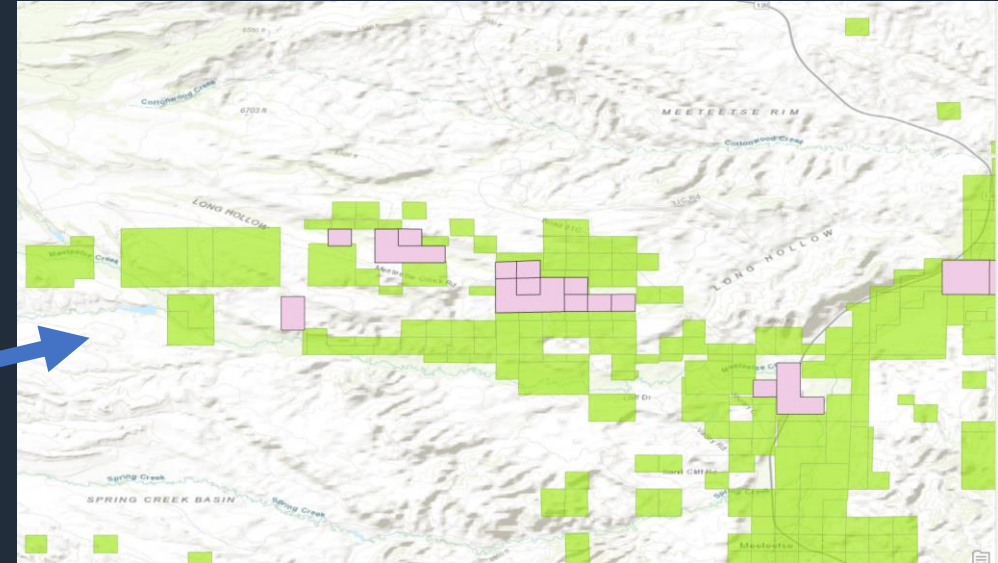
**WaDE 2.0**



# Technical Assistance to Member States: **Wyoming**



**Linen Plat scans**



**WaDE 2.0**



# WSWC Summer and Fall Interns



**Ryan James**  
Utah State Univ.



**Tseganeh Gichamo**  
Utah State Univ.



**Joseph Brewer**  
Utah State Univ.



**Gaby Garcia**  
Duke University



**Morgan Gallagher**  
Virginia Tech. Univ.

# Key Outreach and Collaboration

- Technology Transfer for Water Management Applications Workshop with NASA Western Water Applications Office in August 2019
- California Data Streaming Workshop / AB1755 in September 2019
- OpenET Annual Meeting in October. Initial release early next year
- Internet of Water Technical Committee Meeting in DC
- Upcoming: “That’s so Water Meta!” Workshop. AWRA SLC in Nov.

# Strategic Partnerships

Water Foundation

Mitchell Foundation

MOORE Foundation

EPA Exchange Network Grant Program

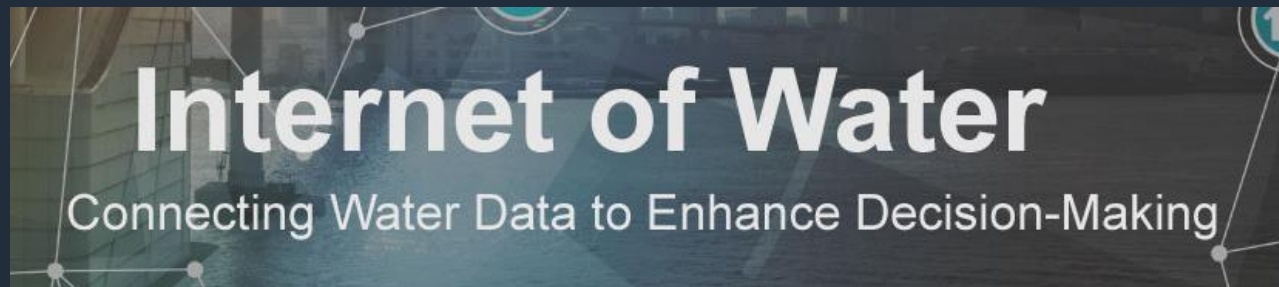


CUAHSI

Universities Allied for Water Research



LABS™





Questions?